

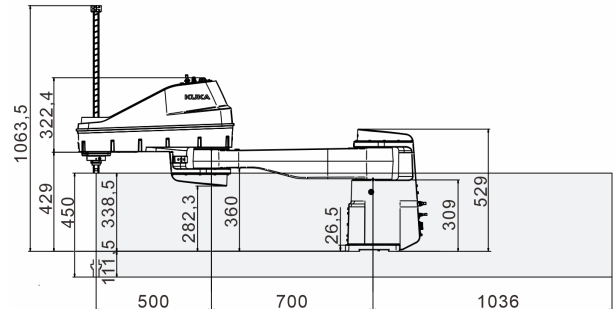


KR 20 R1200 Z450 CS



Workspace graphic

Dimensions: mm



Technical data

Maximum reach	1200 mm
Maximum payload	20 kg
Pose repeatability (ISO 9283)	-
Number of axes	4
Mounting position	Floor
Footprint	230 mm x 235 mm
Weight	approx. 63.2 kg

Axis data

Motion range	
Motion range, axis 1	$\pm 140^\circ$
Motion range, axis 2	$\pm 140^\circ$
Motion range, axis 3	-450 mm / 0 mm
Motion range, axis 4	$\pm 360^\circ$
Speed with rated payload	
Axis velocity, axis 1	245 $^\circ/s$
Axis velocity, axis 2	390 $^\circ/s$
Axis velocity, axis 3	0.91 m/s
Axis velocity, axis 4	1400 $^\circ/s$

Operating conditions

Ambient temperature during operation	0 $^\circ C$ to 45 $^\circ C$ (273 K to 318 K)
--------------------------------------	--

Protection rating

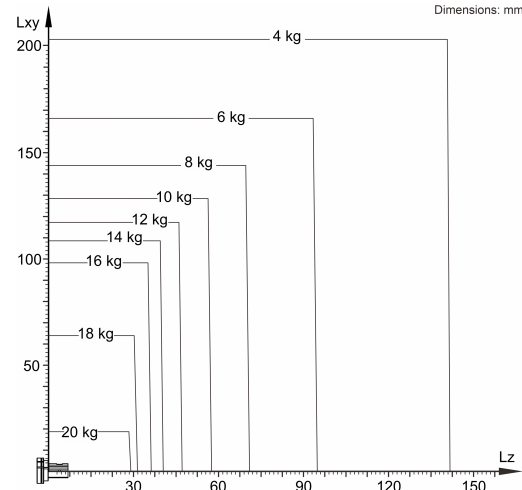
Protection rating (IEC 60529)	IP20
-------------------------------	------

Controller

Controller	KR CS Box-2
------------	-------------

Payload diagram

Dimensions: mm



The KR 20 R1200 Z450 CS is designed for a rated payload of 10 kg in order to optimize the dynamic performance of the manipulator. With the reduced load center distances, higher loads up to the maximum payload may be used. For further consultation, please contact KUKA Support.

Cycle time

120 cycles per minute (25 mm / 300 mm / 25 mm, 2 kg)

